



SDMI Overview for Swedish Delegation

25 February 2015



Louisiana State University

- Ranked in the first tier for Best National Universities
 - U.S. News and World Report
- One of the Nation's Top 25 Most Popular Universities
 - U.S. News and World Report
- Land-grant, sea-grant, and space-grant status
- LSU's recognized leadership during Katrina and BP Oils Spill





COMPUTING KATRINA

Collaboration merges expertise
in hurricane research and high
performance computing

LSU Research

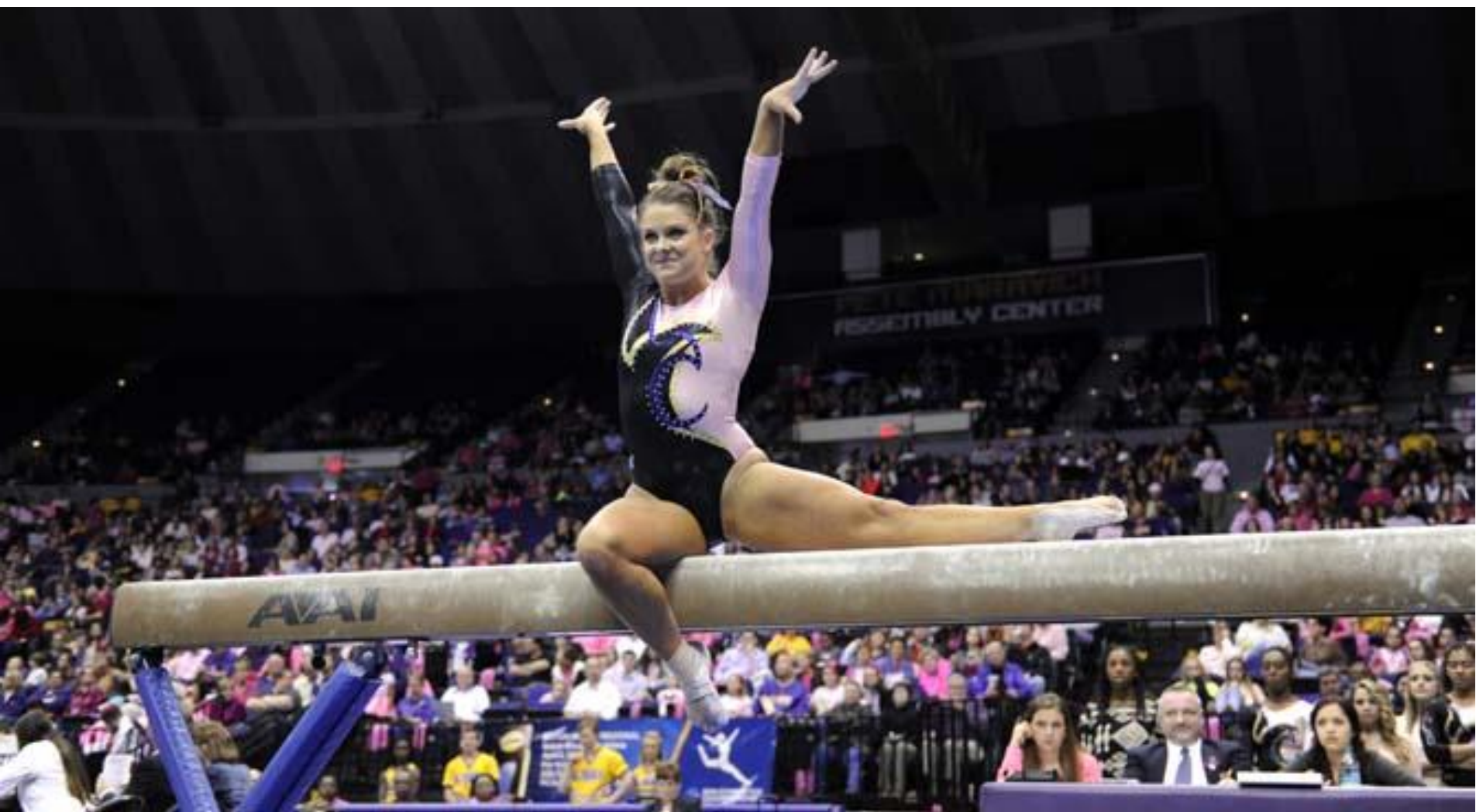
- Home of more than 120 research centers, institutes, labs and programs
- Each year, LSU conducts more than 2,500 sponsored research projects funded by more than \$140 million in external grants from sources including:
 - National Science Foundation
 - National Institute of Health
 - NASA
 - National Endowment for the Humanities
 - Department of Homeland Security













Stephenson National Center for Security Research and Training



Stephenson
Disaster
Management
Institute
(SDMI)



National
Center for
Biomedical
Research and
Training
(NCBRT)



Carrol L.
Herring
Fire and
Emergency
Training
Institute
(FETI)



National
Center for
Disaster Fraud
(NCDF)



Law
Enforcement
Online
(LEO)



❖ *Mission*

- The mission of the Stephenson Disaster Management Institute is to save the lives of people and animals by continuously improving disaster management through thought leadership, applied research and executive education.

❖ *Goals*

- Bring business principles and research to bear on disasters
- Produce applied research and disseminate best practices to the business and practitioner communities
- Build partnerships between academic scholars, emergency management practitioners, and the private sector



**STEPHENSON DISASTER
MANAGEMENT INSTITUTE**
Stephenson National Center for
Security Research and Training

SDMI Bench of Experts

Staff	Research Affiliates	Senior Fellows	WAEs	Consultants	GAs	Board of Experts	LSU (Add Comp)
18	17 PhDs	10	14	6	5	12	3
Total of 80+							

Full-Time Staff

- Retired LTC, Deputy Superintendent of LSP
- 2 Former Deputy Director of GOHSEP
- 2 Former Chairman of SIEC
- 1 Member of FEMA's NAC
- 3 U.S. Army Reserve LTCs
- 2 w/Top Secret Security Clearance
- 1 w/Secret Security Clearance
- 3 PhD Candidates
- 1 JD
- 9 Masters Degrees
- Red Cross Board Member
- 1 Master Exercise Practitioner
- 1 CISSP
- 2 GISP / 9 GIS Technicians

Board of Experts

- 2 Harvard MBAs
- 1 Retired LTG of U.S. Army
- 1 Retired CAPT, USCG
- 1 Current Director of GOHSEP
- 1 Former Directors of GOHSEP
- 1 FEMA Technical Hazards Director
- 3 Chief Executive Officers



**STEPHENSON DISASTER
MANAGEMENT INSTITUTE**
Stephenson National Center for
Security Research and Training

LA BEOC

LOUISIANA BUSINESS EMERGENCY OPERATIONS CENTER



LA BEOC

LOUISIANA BUSINESS EMERGENCY OPERATIONS CENTER

Built Through Public – Private Collaboration



Entergy®



AVAYA

PolyVision®

a steelcase company

frontrow™

ZEROHOUR™
BEYOND THREE-RING BINDERS AND WHITEBOARDS

powered by



GoToMeeting®

SDMI's Center for Business Preparedness

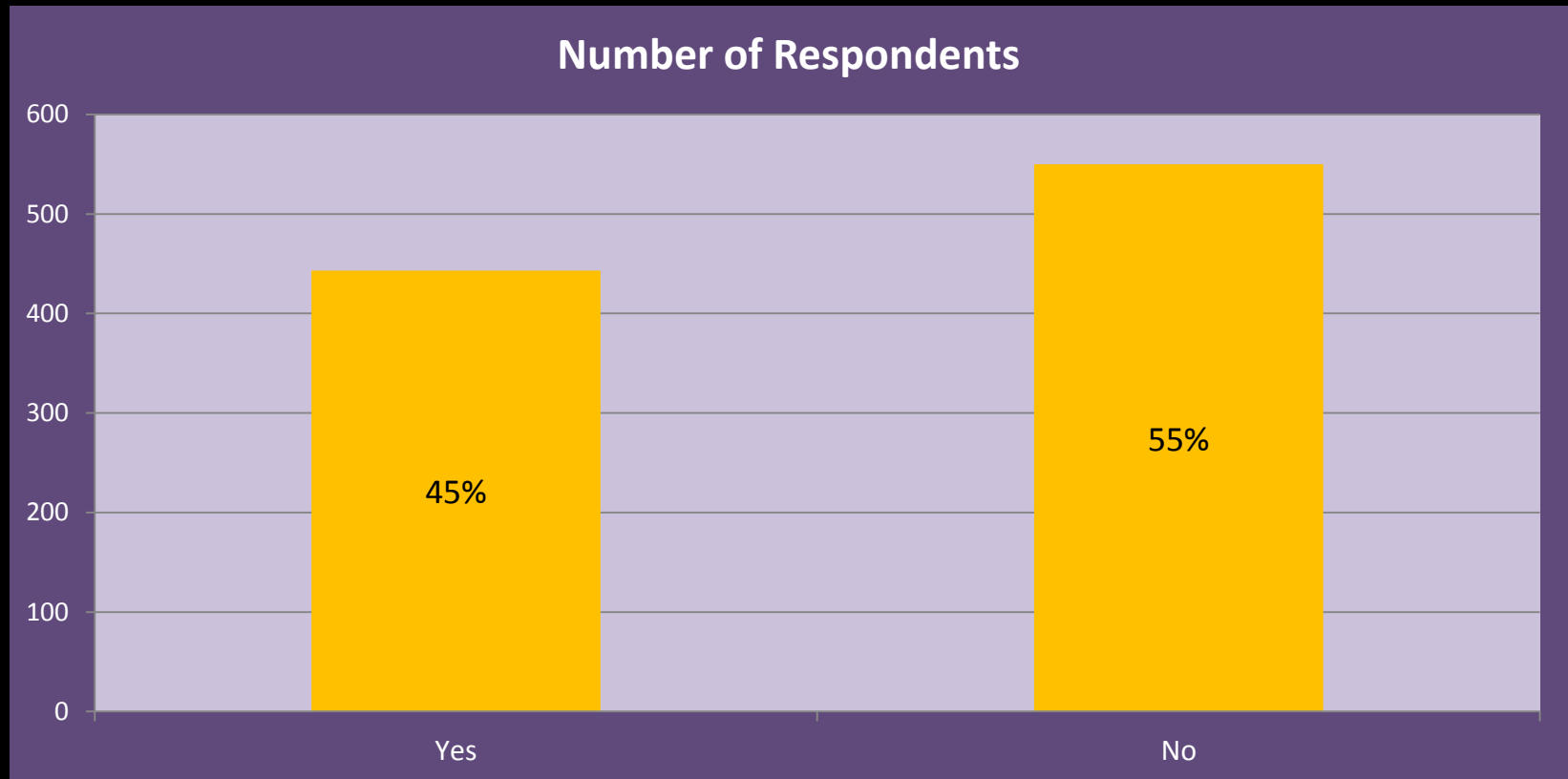
- **GOALS**

- Bridge the gap between academic research, business preparedness, and continuity of operations
- Apply proven business management techniques to the challenge of disaster preparedness and community resilience
- Create a cultural shift in the value of preparedness by creating a central point of collaboration for:
 - Enhance and evolve private sector resilience
 - Research
 - Knowledge sharing
 - Outreach
- Global collaboration with academic institutions, private sector organizations, public entities:
 - Connect, collaborate, and share smart practices
 - Gain insight, knowledge, and support
 - Serve as a source for the latest tools and research



GOHSEP / SDMI Small Business Initiative

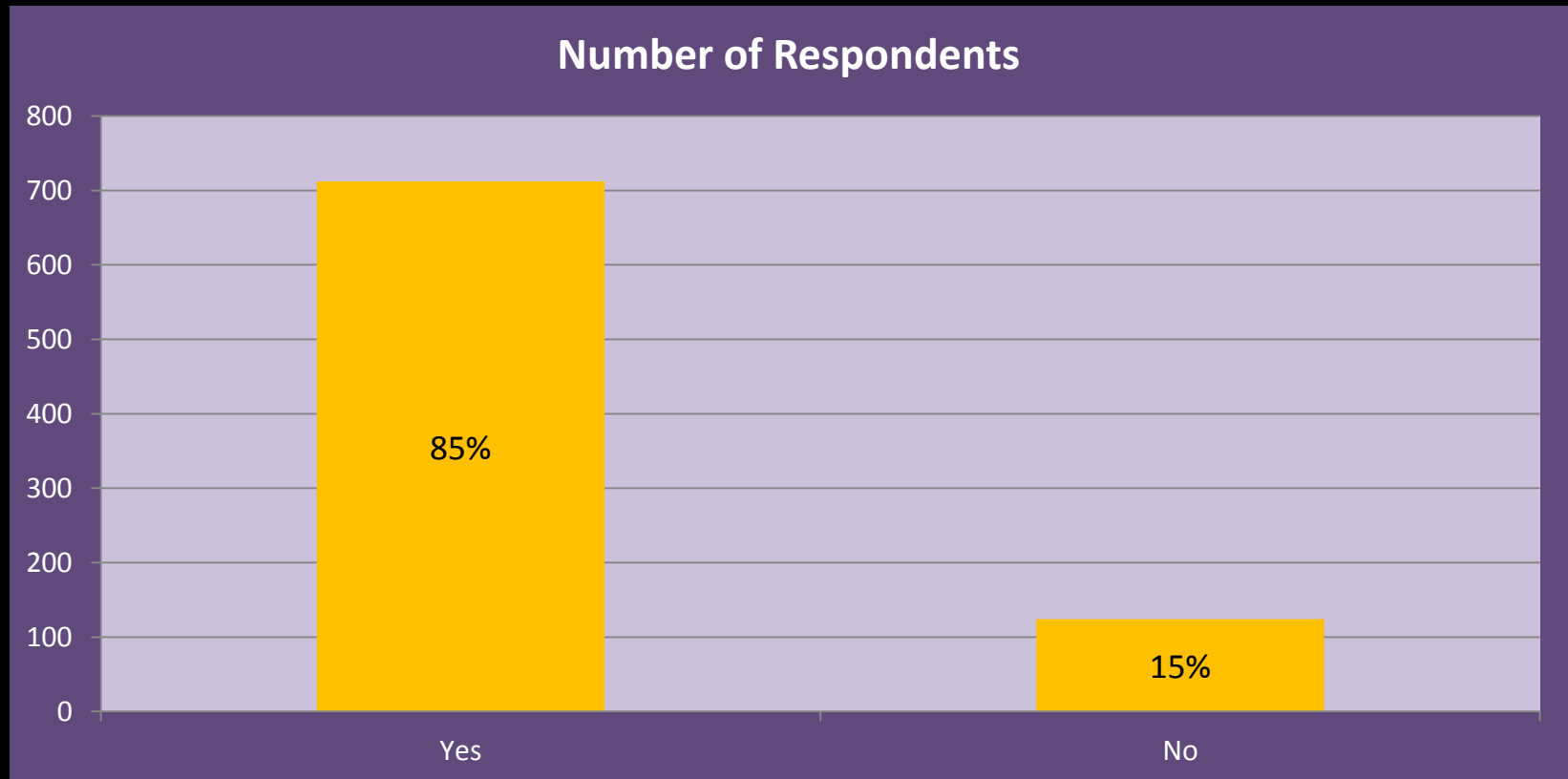
Does your business have a written emergency response plan?





GOHSEP / SDMI Small Business Initiative

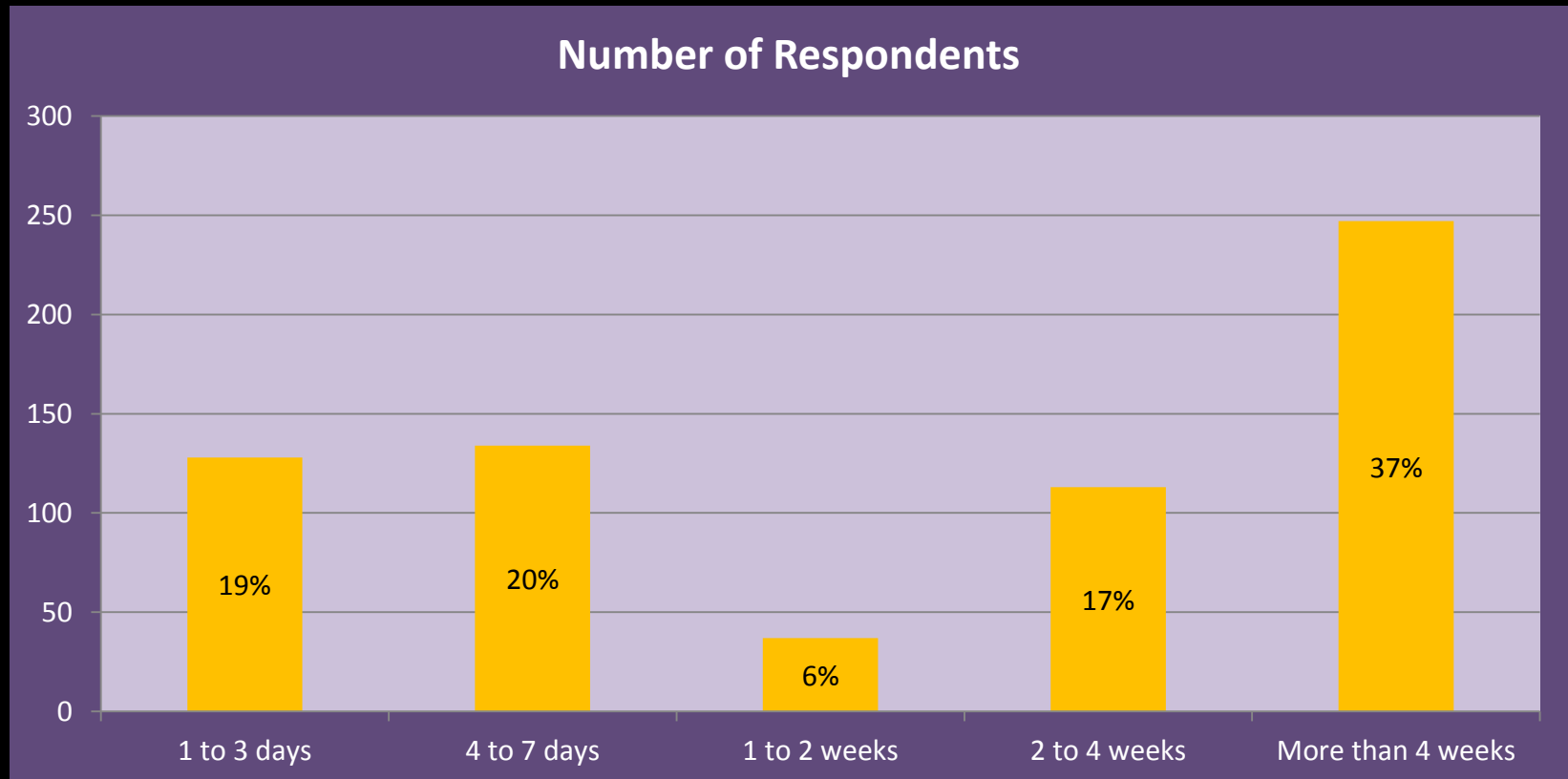
Were your normal operations interrupted following Hurricane Katrina/Gustav ?





GOHSEP / SDMI Small Business Initiative

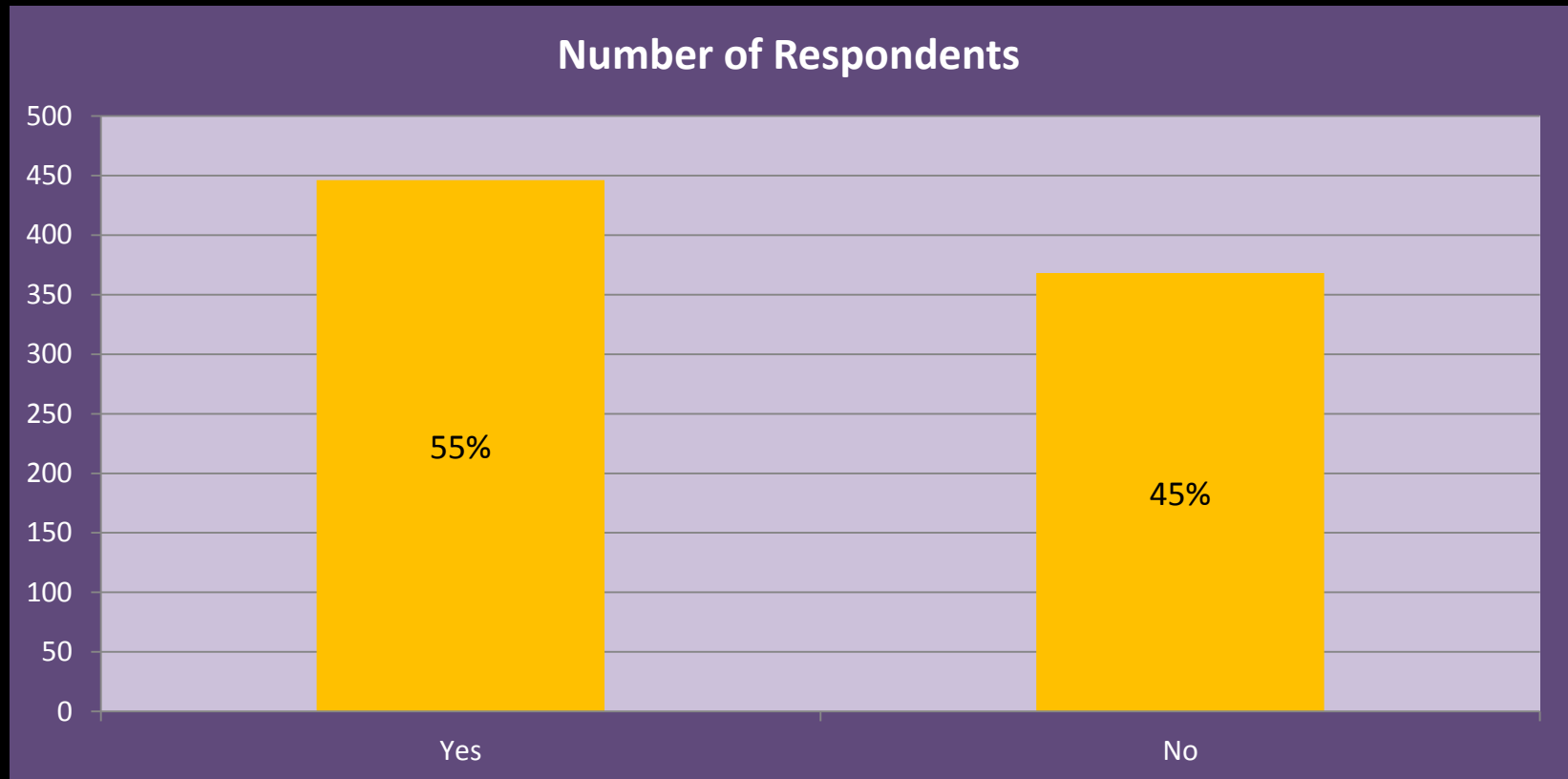
For how many days did Hurricane Katrina/Gustav disrupt normal operations?





GOHSEP / SDMI Small Business Initiative

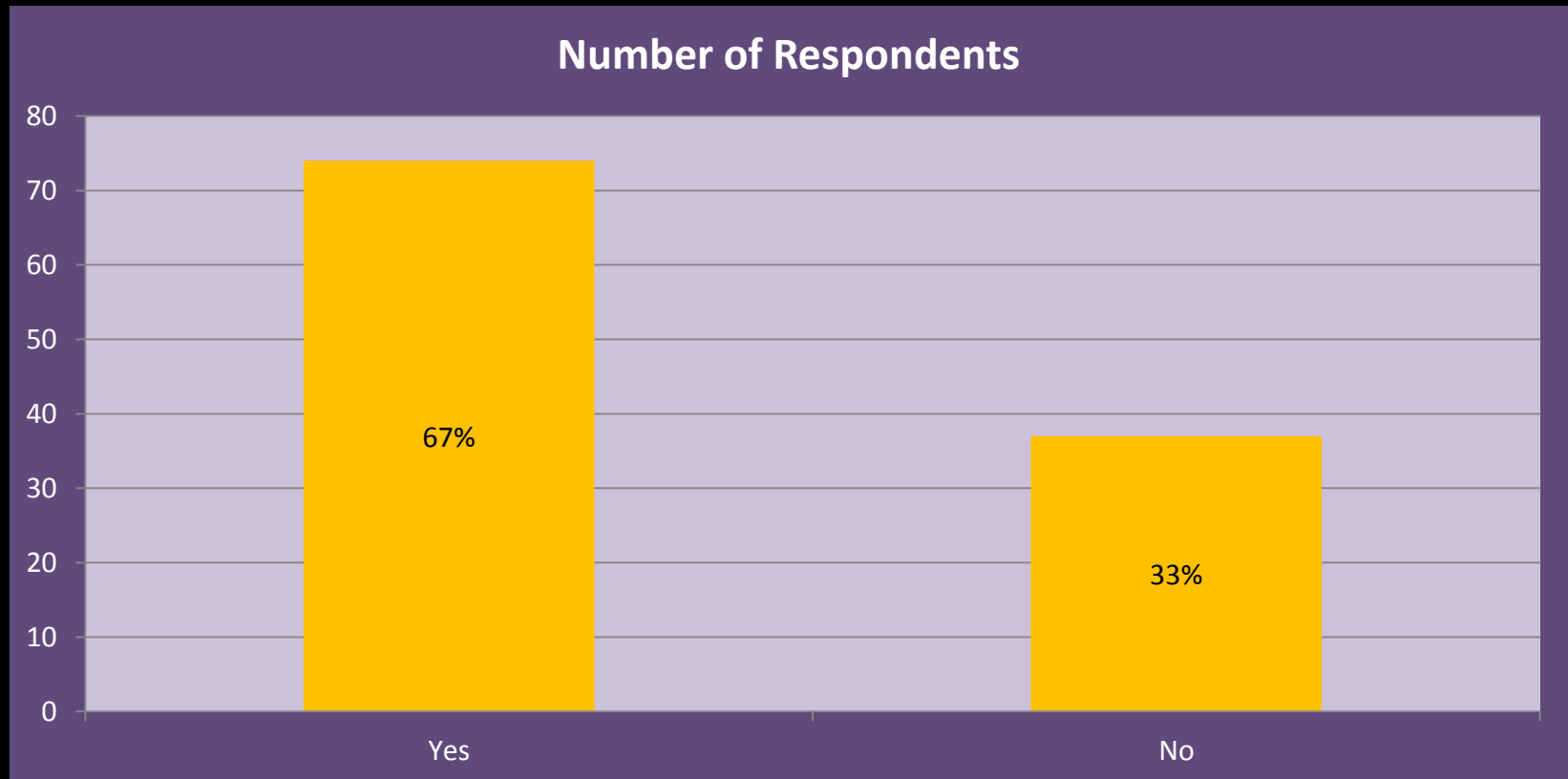
Did your business make any changes following Hurricane Katrina/Gustav to become better prepared for future disasters?





GOHSEP / SDMI Small Business Initiative

Did these changes reduce Hurricane Isaac's impact on your business?



❖ *Expanding Domestic Applications*

- Partnered with LSU Civil Engineering and UNO to sponsor the National Evacuation Conference
- Participated in a New York City Evacuation Planning Meeting with LSU Civil Engineering and UNO
- Working with the National Emergency Management Association to conduct a study on state to state support for private sector resources and volunteer organizations
- Participating with FEMA on a Hurricane Evacuation Study for Southeast Louisiana



FEMA



Swedish Civil
Contingencies
Agency

❖ *International Influence*

- Working with the Japanese Consulate
- Hosting a Swedish Delegation on Resiliency
- Collaborating with UN on R!SE
- Invited to Speak at the Following Conferences:
 - Australian Association of Professional Communication Officials
 - Melbourne Fire Brigade
 - Keynote for 13th Annual Emergency Management Conference
- Conducted a Webinar for PASIA following Typhoon Haiyan
- Hosting Latin American University Delegation for USAID



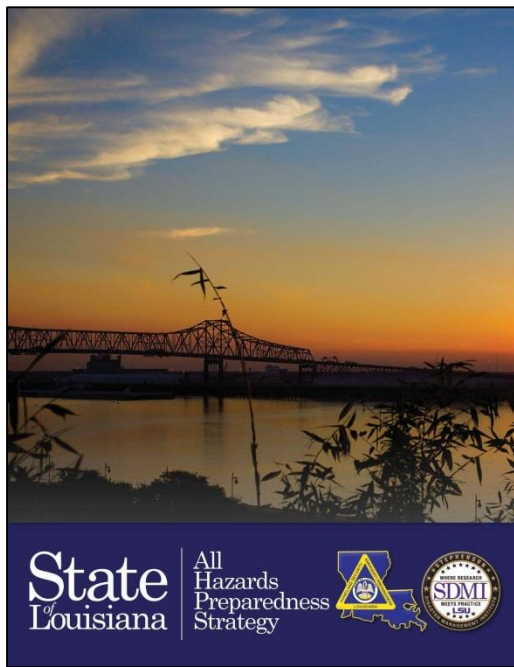
Australian Government
Attorney-General's Department
**Australian Emergency
Management Institute**



東北大学
TOHOKU UNIVERSITY



USAID
FROM THE AMERICAN PEOPLE



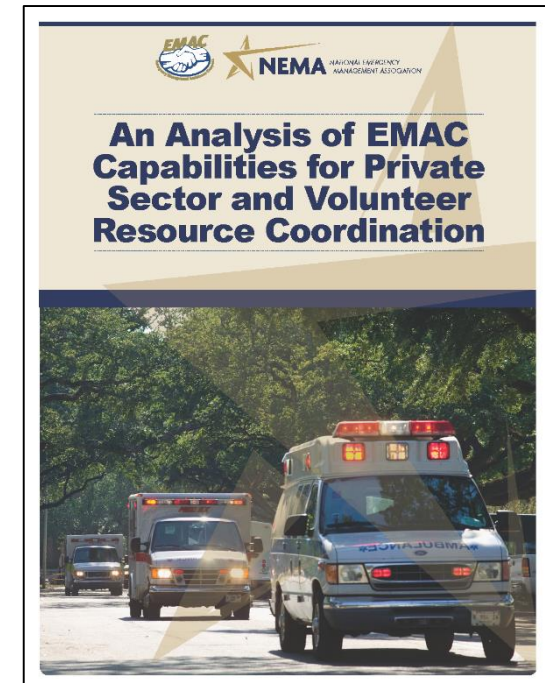
**STEPHENSON DISASTER
MANAGEMENT INSTITUTE**

**Stephenson National Center for
Security Research and Training**



Current / Previous SDMI Projects

- State Homeland Security Strategy
- Capitol Emergency Response Plan
- Capitol Continuity of Operations Plan
- 9-1-1 Mapping
- Critical Infrastructure Mapping
- Small Business Disaster Preparedness Initiative
- Shell Oil Company Oil Response Outreach Initiative
- State Exercise and Training Program
- Cyber Security Initiative
- Consequence Modeling for Storm Surge





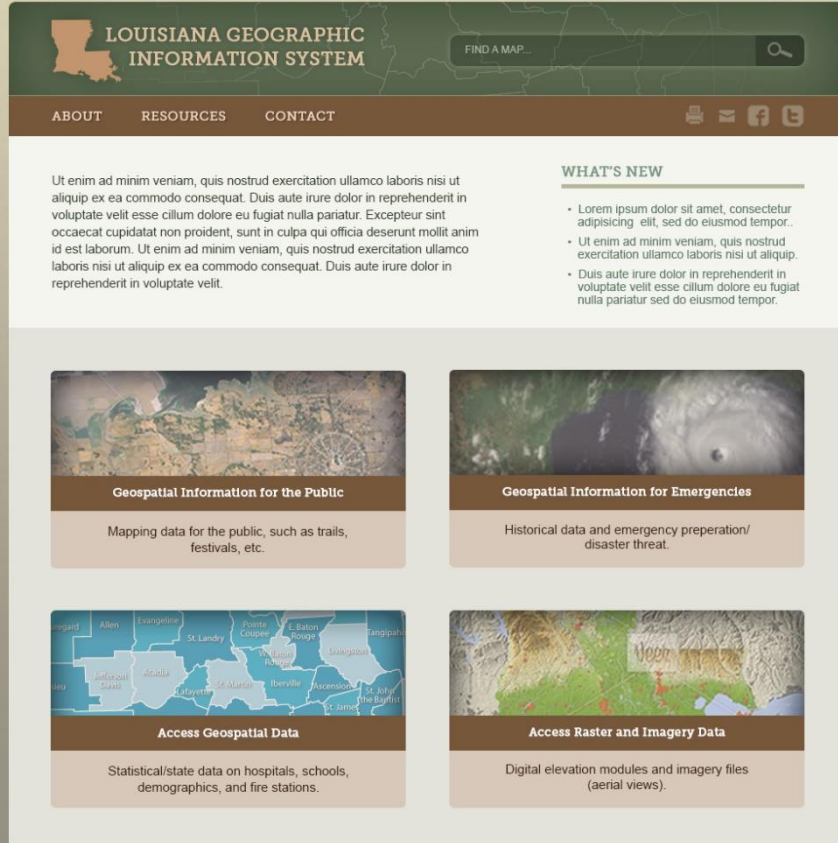
SDMI GIS Based Projects

GIS Emphasis on

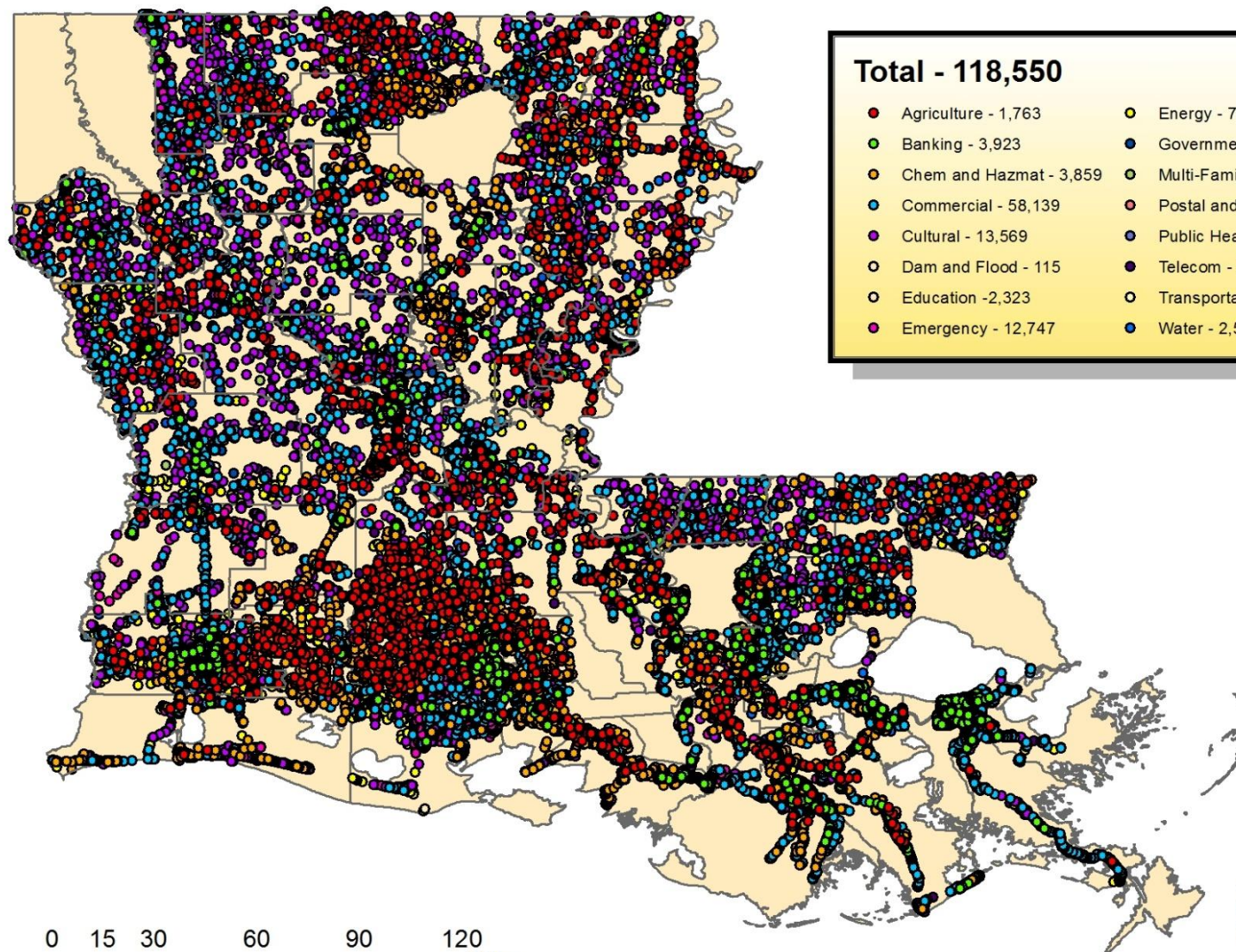
- Vector Data
- Raster Data
- Data for the Public
- Data for Emergencies

Mapping 9-1-1 for Rural Parishes

Mapping the State's CI/KR



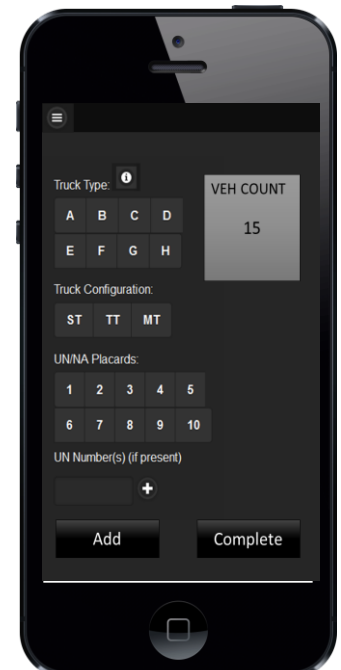
Hazard Mitigation Collection Progress



Mobile Web Application

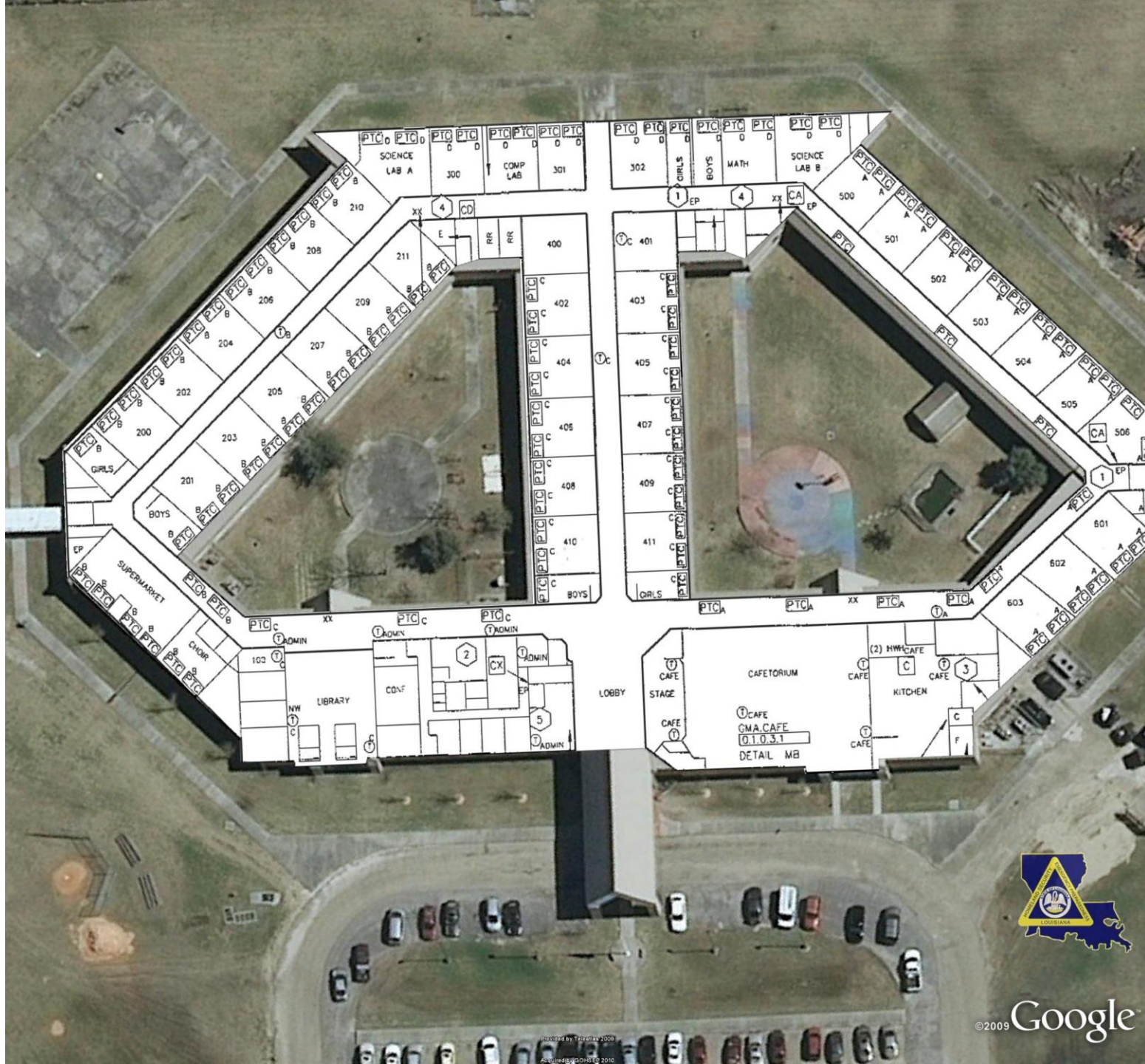
Features

- HTML5
- CSS3
- jQuery Mobile
- Local Storage and Manifest for offline capabilities

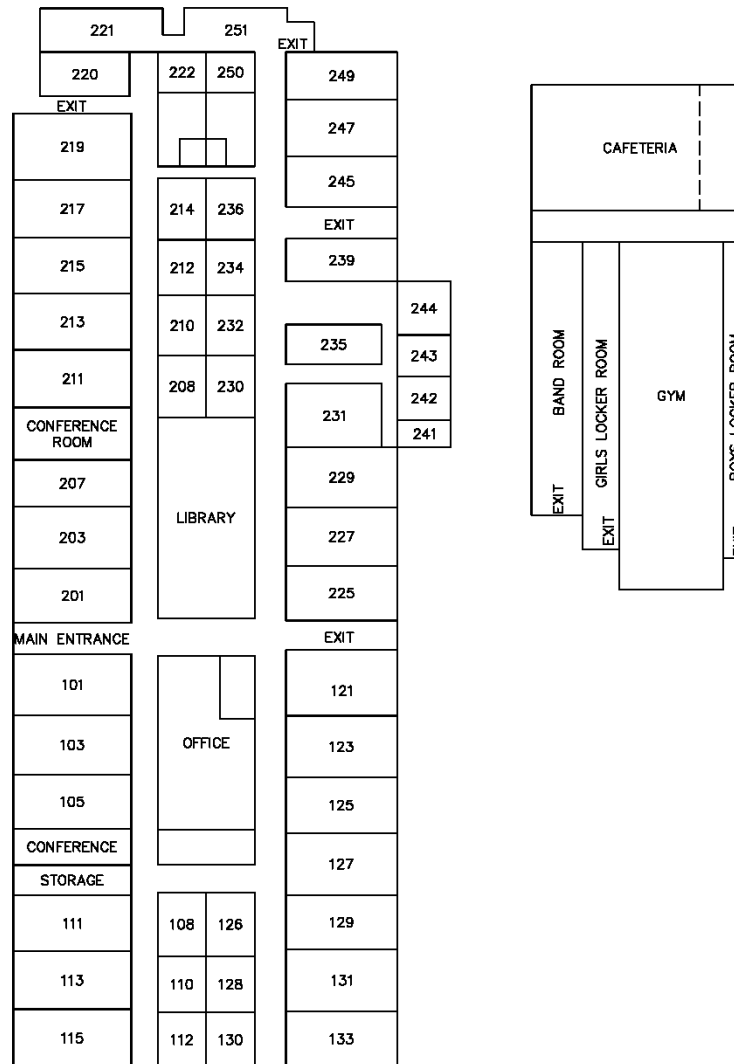




SDMI School Safety Program



FLOOR PLAN N.T.S.



JEFFERSON PARISH PUBLIC SCHOOLS

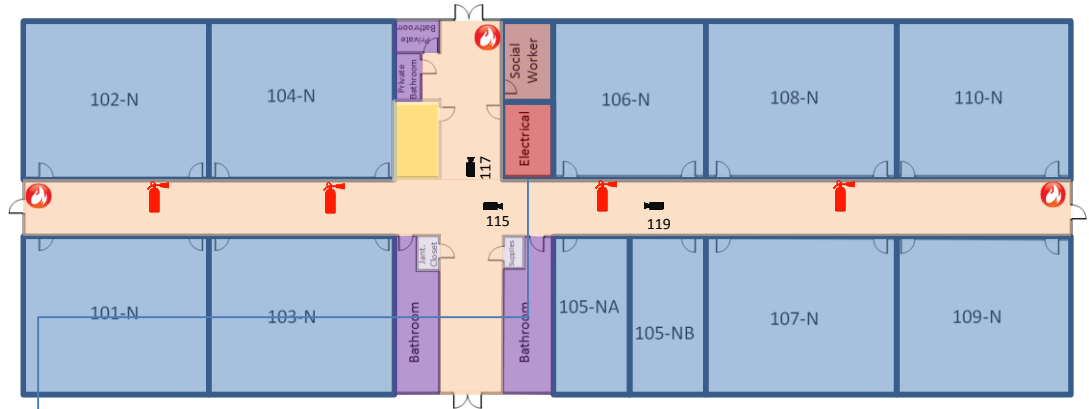
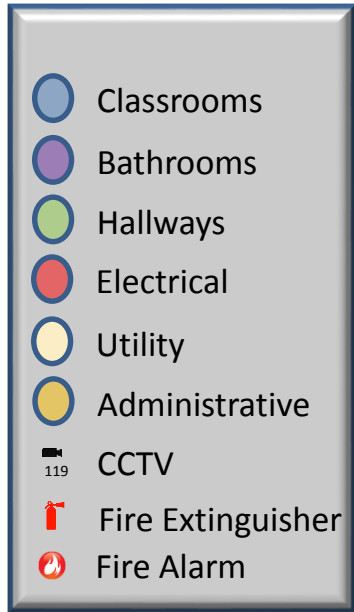
MEISLER MIDDLE SCHOOL
3700 CLEARY AVENUE
METAIRIE, LA 70002



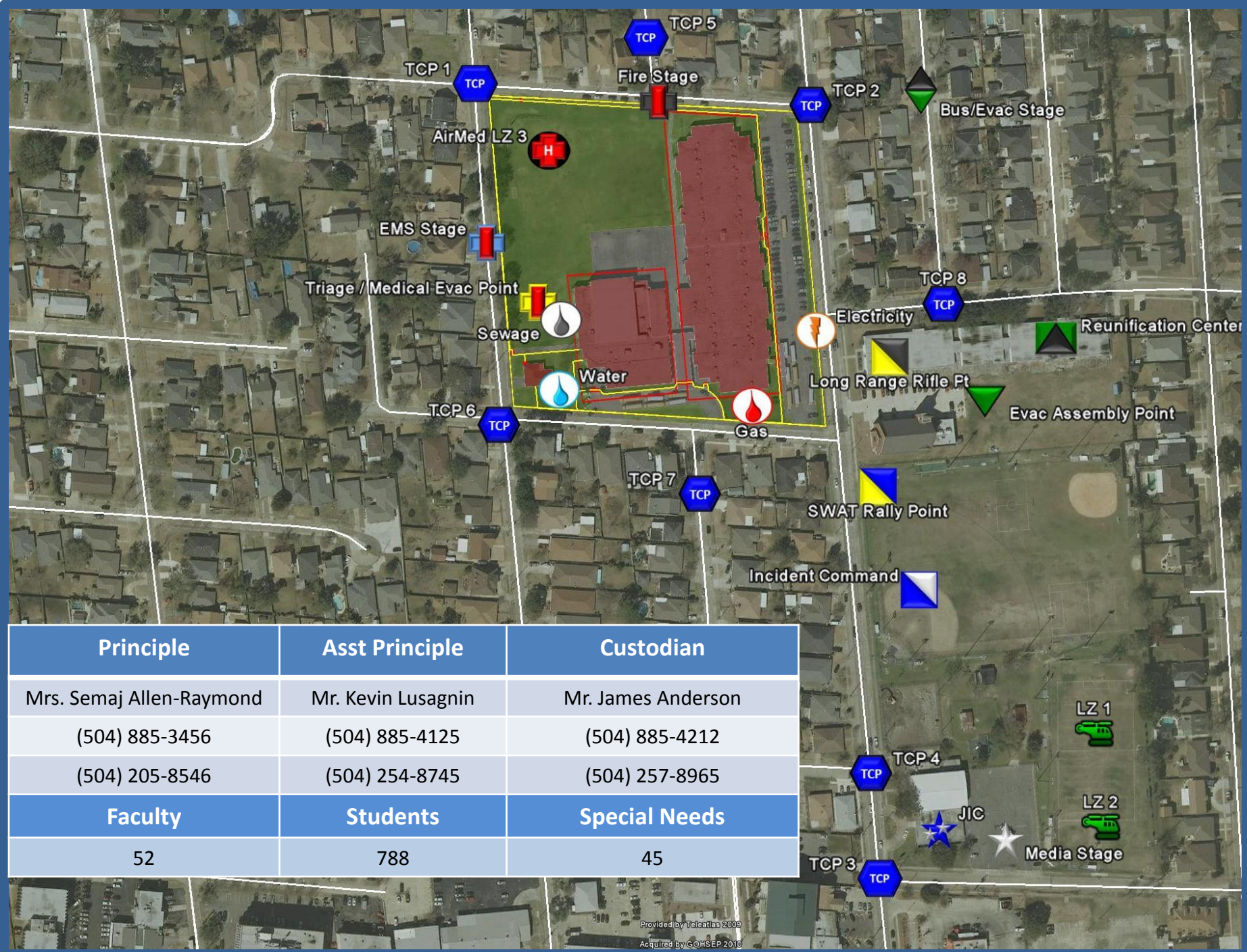
6767 Perkins Road Suite 200 Baton Rouge, LA 70808
Tele: 225 769-0546 Fax: 225 767-0060
www.csronline.com

Date: November 2005

Campus Code: **081**



- Outlets Classroom #120
- Outlets Classroom #121
- Boy's Hand Dryers
- Girls Hand Dryers
- Outlets Classroom 105 & 106
- Outlets Classroom 106 and Corridor
- Outlets Classroom 107
- Outlets Classroom 124
- Outlets Classroom 123
- Power to Energy Management Panel AC-A
- Spares
- Men's Hand Dryer
- Ladies Hand Dryer
- Spare
- Spare
- Feed to Section B of 1 LA
- Feed to Section B of 1 LA
- Feed to Section B of 1 LA
- Outlets Classroom 113 & 111
- Outlets Classroom 111 & 110
- Outlets Classroom 110 & 109
- Outlets for Drinking Fountain & Corridor
- Outlets for Drinking Fountain & Corridor
- Power to Bathroom Exhaust Fan
- Outlets Classroom 104 & 102
- Outlets Classroom 101 & 103
- Outside Sign
- Spares
- Spares
- Spares
- Spares
- IPF Camera Black Box



Joint CyberSecurity and Training Lab (JCTL)

Capabilities

- Train as We Fight – Simulated operational networks to safely test capabilities
- Closed network to allow real force on force attacks in a controlled environment
- Immersive training, tactics, techniques and procedures development and validation
- Tier I through Tier III environment for simulation and modeling
- LANG CPT Mobile Response Cart

